

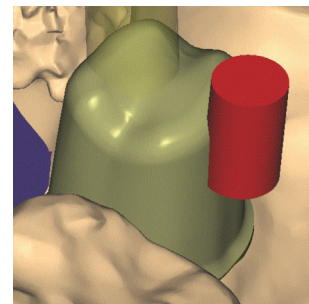
## Parameter Dimensions

[unit: mm]

		Swiss-Turn	Blank Milling
Abutment	A	1.0	
	B	≥ 3°	
	C	1.6	
Crown	D	1.2	
	E	0.02	0.03
	F	0.03	0.03
	G	0.5*	

\*Select Zones by Distance may vary depending on shoulder width

## Vertical Retention Groove Placement



When using a vertical retention groove, use a hole with diameter 2.0mm or greater. Make sure the vertical retention groove is placed such that the crown will be properly aligned.